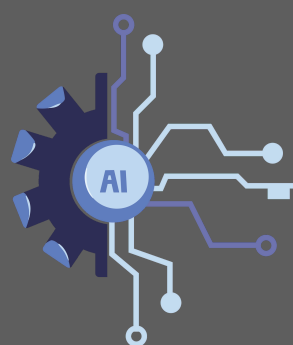




STATISTIK KEUANGAN TRIWULAN II TAHUN 2025

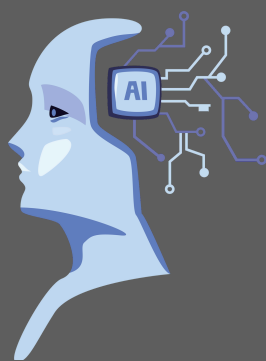
DIPA DUKUNGAN MANAJEMEN
DIPA-01

1. BELANJA PEGAWAI
64,86%

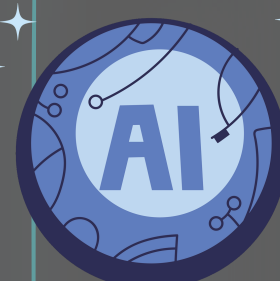
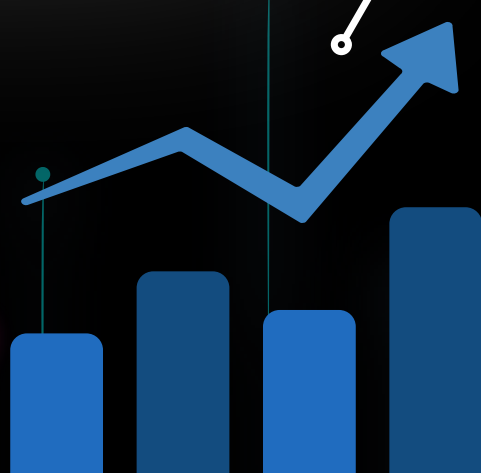


BELANJA BARANG 2.
39,48%

3. BELANJA MODAL
0,00%



CAPAIAN IKPA TW-II 4.
95,77





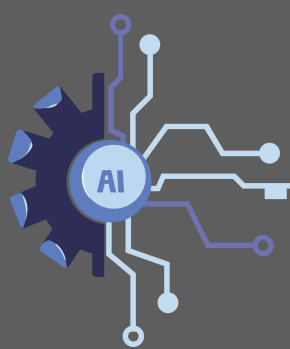
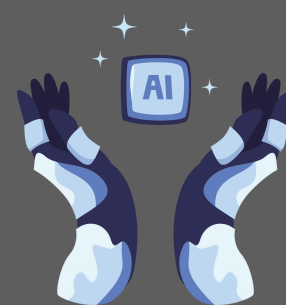
STATISTIK KEUANGAN TRIWULAN II TAHUN 2025

DIPA DUKUNGAN TEKNIS
DIPA-05



**1. RO PENGAMANAN
SIDANG**

60%



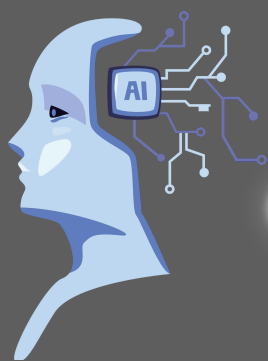
RO PRODEO 2.

0,00%



3. RO POSBAKUM

50,28%



**RO SIDANG DI LUAR
GEDUNG PENGADILAN 4.**

0,00%



5. CAPAIAN IKPA TW-II

82,51

